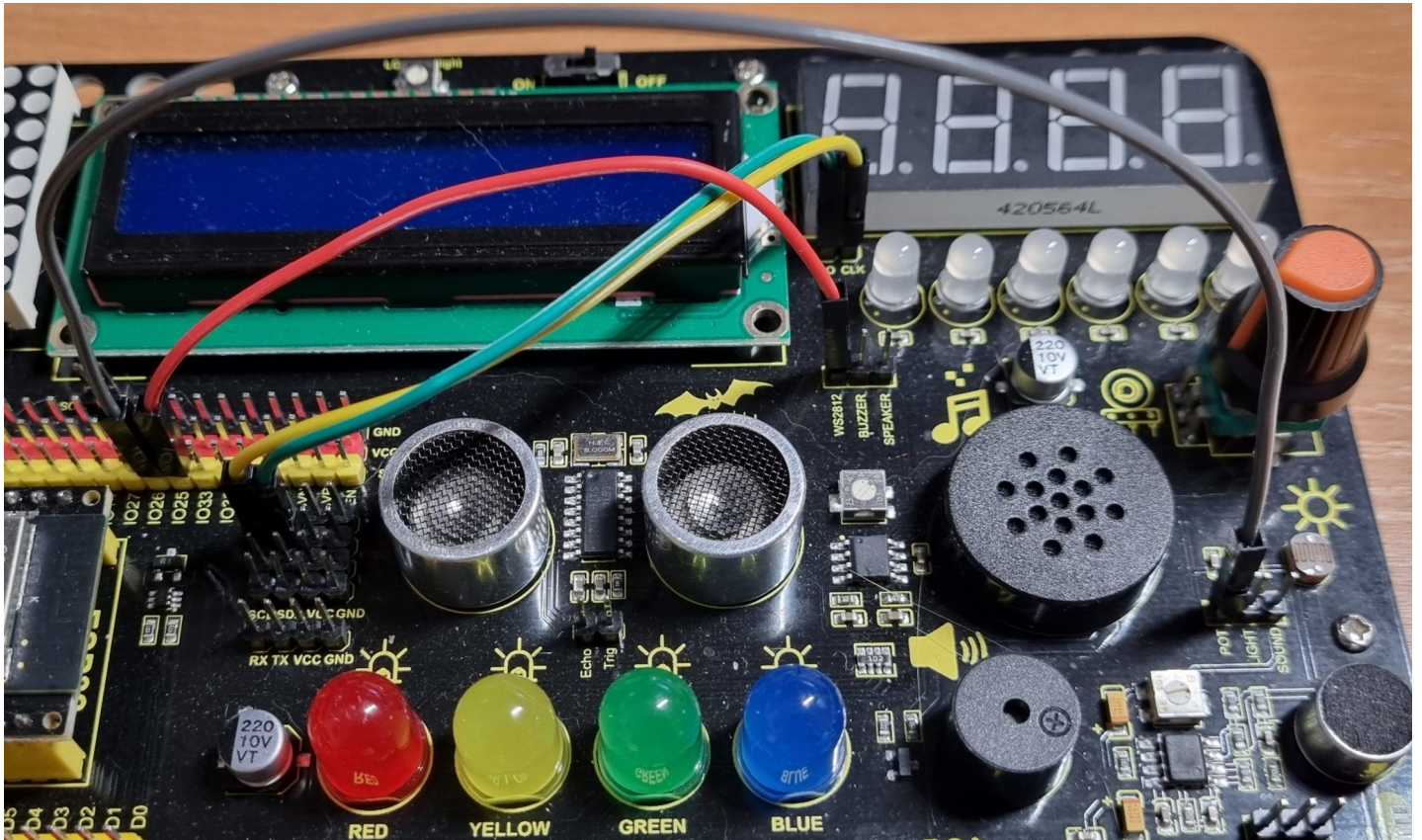


19 juni 2025

## Verbindingen op de Keystudio Startter Kit FKS0001



4 digit LED :	SCL → CLK	Yellow
	SDA → DIO	Green
Neopixel leds :	IO25 → WS2812	Red
Potentiometer :	IO26 → POT	Gray

Data sheet van TM1650 – I2C 4 digit 7 segment led driver:

[https://www.mikrocontroller.net/attachment/568815/TM1650\\_V1.10-1.pdf](https://www.mikrocontroller.net/attachment/568815/TM1650_V1.10-1.pdf)